



11, DEACON COURT Dedworth Road, Windsor, SL4 4LW
£265,000

 **HORLER**

11, DEACON COURT Dedworth Road, Windsor, SL4 4LW

Situated to the west of Windsor, this impressive top-floor apartment offers a superb living experience. It comprises two spacious double bedrooms and forms part of a purpose-built development, making it ideal for those seeking both comfort and generous proportions. The property also includes a well-appointed reception room, perfectly suited for both relaxing and entertaining.



General Information

Service Charge Approx £575 per 6 months

Lease - 104 years remaining

Council Tax Band 'C'

Legal Note

Although these particulars are thought to be materially correct their accuracy cannot be guaranteed and they do not form part of any contract.

Property Summary

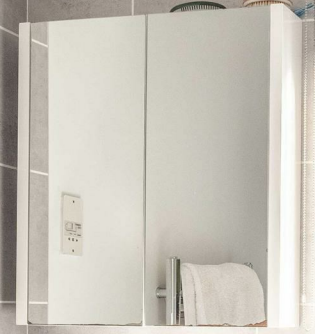
Located to the West of Windsor this splendid top-floor apartment offers a delightful living experience. Boasting two generously sized double bedrooms, this purpose-built residence is perfect for those seeking comfort and space. The apartment features a well-appointed reception room, ideal for relaxation or entertaining guests.

The property is in superb condition, ensuring a move-in ready experience for its new occupants. One of the standout features is the ample accommodation, which is larger than average for similar properties in the area. This extra space provides versatility, whether you wish to create a home office, a guest room, or simply enjoy a more spacious living environment.

In addition to its impressive interior, the apartment comes with the added convenience of off-road parking, making it an excellent choice for those with cars. Furthermore, a garage is included, providing additional storage or parking options.

Windsor is renowned for its rich history and vibrant community, with an array of shops, restaurants, and parks nearby. This property presents a wonderful opportunity for both first-time buyers and those looking to downsize without compromising on quality or location. Do not miss the chance to make this exceptional apartment your new home.

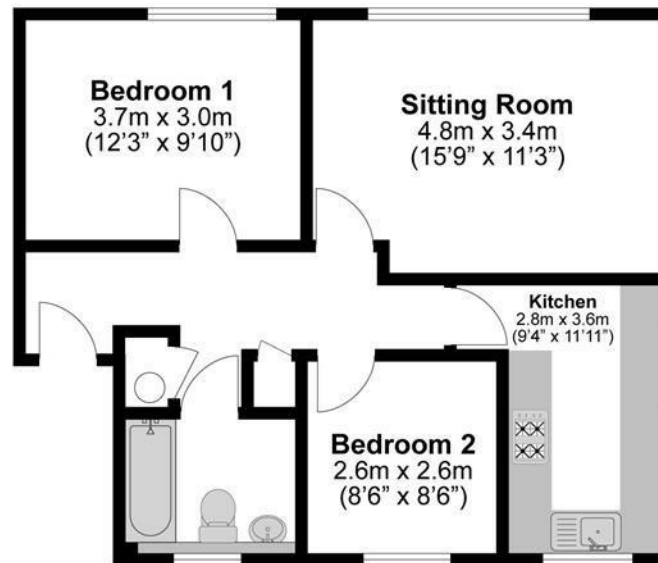
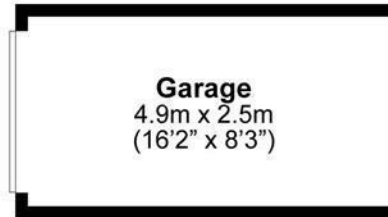




Total Approximate Floor Area

771 Square feet

72 Square metres



**Illustrations are for identification purposes only,
measurements are approximate, not to scale.**